

Proposed 2014 to 2023 Impact Fees

Mark Schnur

Planner IV

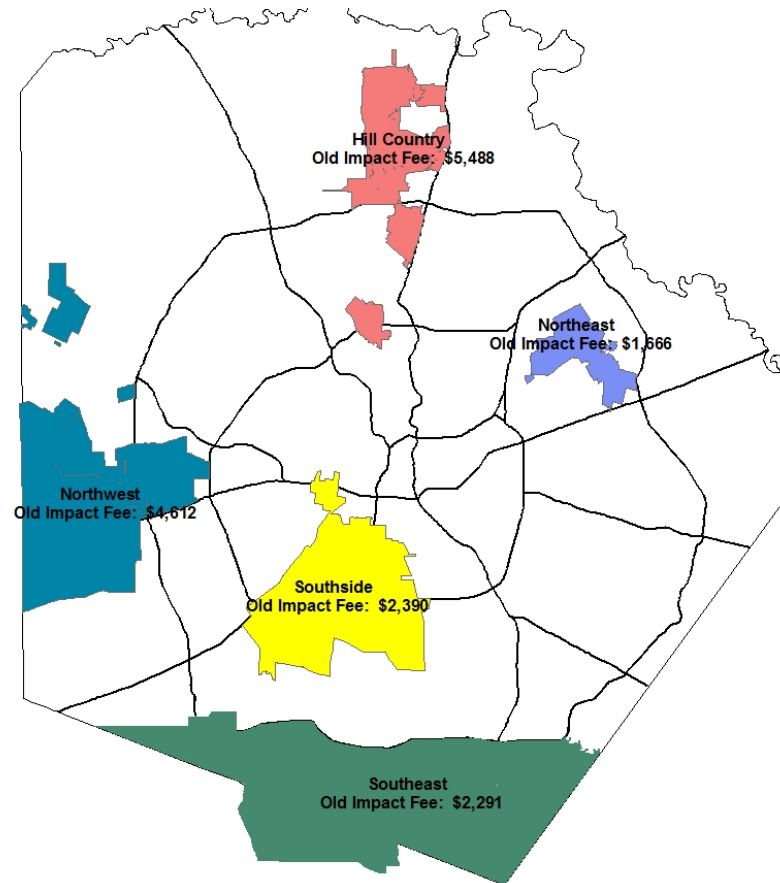
December 19, 2013

CIAC Meeting



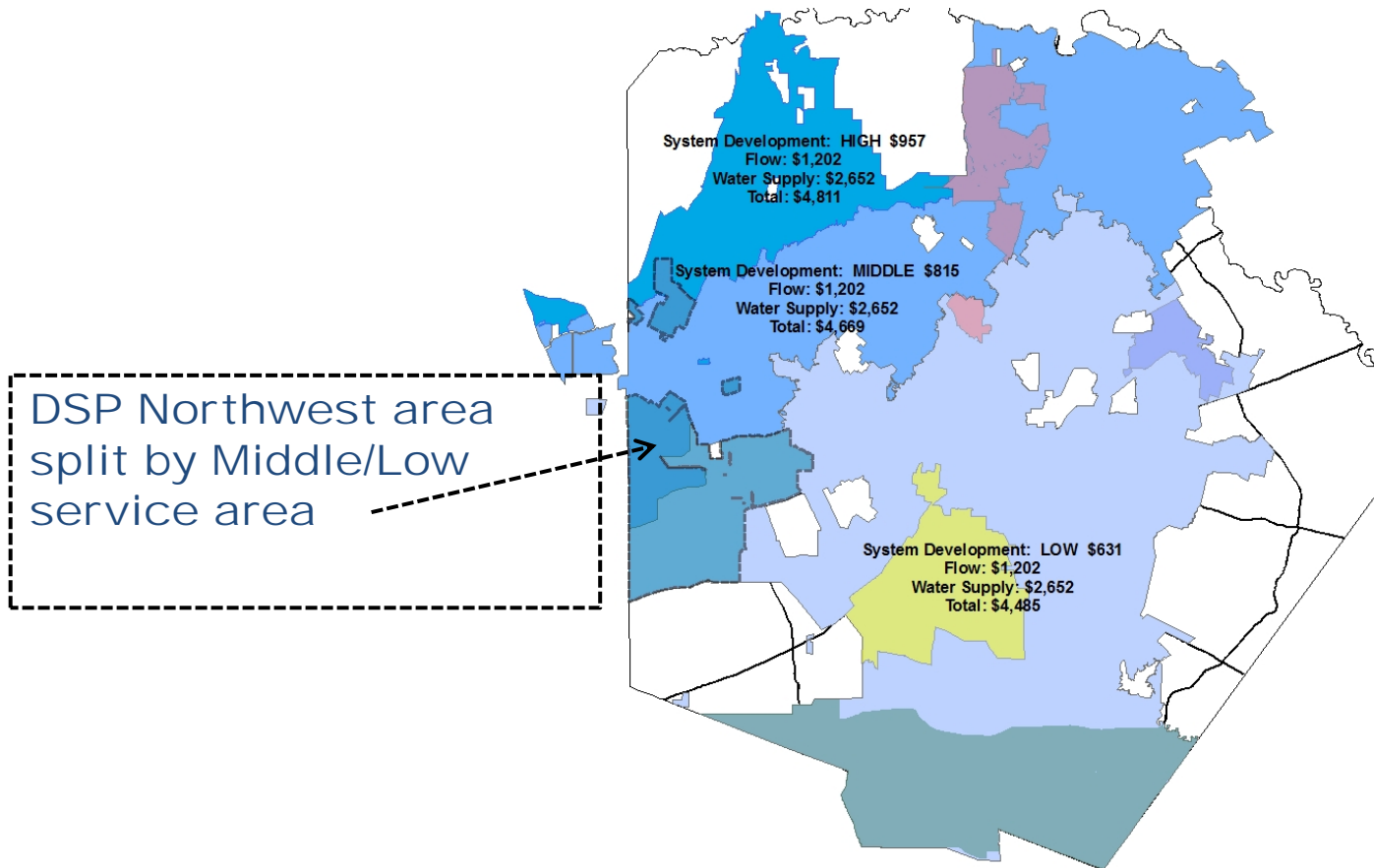
Bexar Met Impact Fees

Current Impact Fees by Service Area



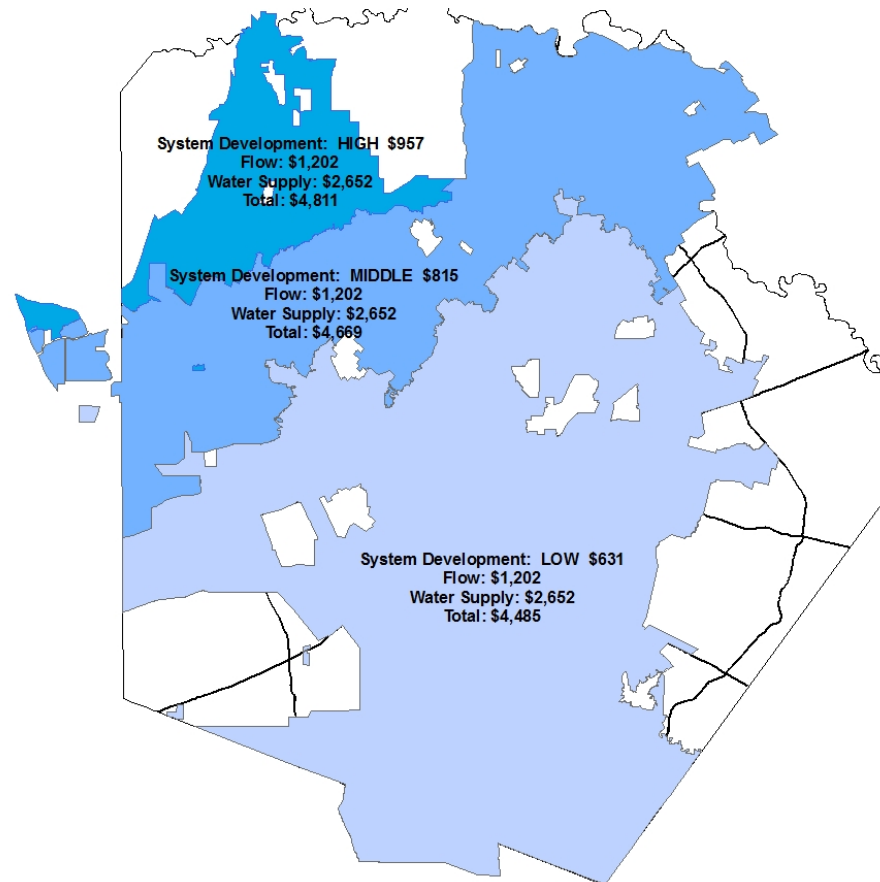
SAWS Water Impact Fees

DSP Service Areas Overlap with SAWS Service Areas



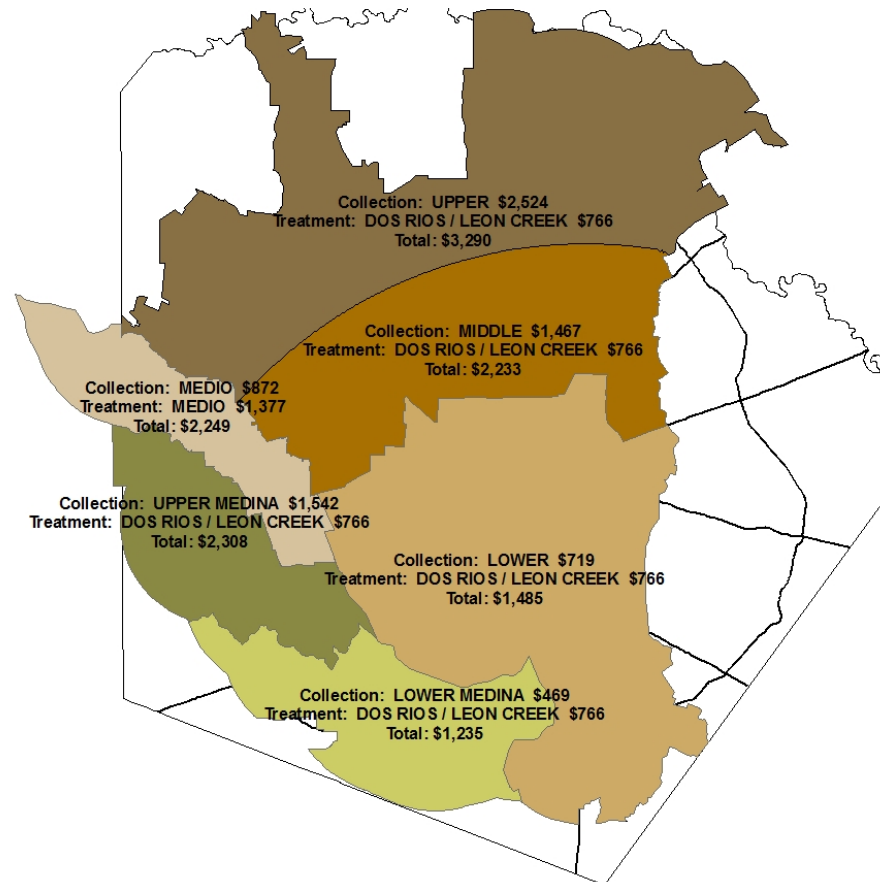
SAWS Water Impact Fees

Proposed Impact Fees by Service Area



SAWS Wastewater Impact Fees

Proposed Impact Fees by Service Area



Proposed Impact Fees

Impact Fee	Service Area	2013 Calculated Fee (\$/EDU)	2010 Calculated Fee (\$/EDU)	Proposed Rate Credit (\$/EDU)	Proposed Fee (\$/EDU)	Current Fee (\$/EDU)	Change	% Change
Water Supply	All	\$ 2,947	\$ 1,440	\$ 295	\$ 2,652	\$ 1,297	\$ 1,355	104%
Flow	All	\$ 1,269	\$ 1,333	\$ 67	\$ 1,202	\$ 1,247	(\$ 45)	-4%
System Development	High	\$ 988	\$ 996	\$ 31	\$ 957	\$ 966	(\$ 9)	-1%
System Development	Middle	\$ 843	\$ 803	\$ 28	\$ 815	\$ 774	\$ 41	5%
System Development	Low	\$ 657	\$ 609	\$ 26	\$ 631	\$ 579	\$ 52	9%
Treatment	Medio Creek	\$ 1,458	\$ 1,482	\$ 81	\$ 1,377	\$ 1,379	(\$ 2)	0%
Treatment	Dos Rios/Leon Creek	\$ 813	\$ 581	\$ 47	\$ 766	\$ 552	\$ 214	39%
Collection	Medio Creek	\$ 897	\$ 597	\$ 25	\$ 872	\$ 582	\$ 290	50%
Collection	Upper Medina	\$ 1,632	\$ 1,073	\$ 90	\$ 1,542	\$ 1,053	\$ 489	46%
Collection	Lower Medina	\$ 503	\$ 602	\$ 34	\$ 469	\$ 594	(\$ 125)	-21%
Collection	Upper Collection	\$ 2,639	\$ 1,880	\$ 115	\$ 2,524	\$ 1,795	\$ 729	41%
Collection	Middle Collection	\$ 1,540	\$ 1,203	\$ 73	\$ 1,467	\$ 1,142	\$ 325	28%
Collection	Lower Collection	\$ 759	\$ 579	\$ 40	\$ 719	\$ 552	\$ 167	30%

Proposed Impact Fees

By Service Area

Water Service Area	Wastewater Service Area	Proposed Impact Fee per EDU	Current Impact Fee per EDU	Increase / (Decrease)	% Increase
High	Medio Creek	\$ 7,060	\$ 5,471	\$ 1,589	29%Min %
High	Upper Collection	\$ 8,101	\$ 5,857	\$ 2,244	38%Max fee
Middle	Medio Creek	\$ 6,918	\$ 5,279	\$ 1,639	31%
Middle	Upper Medina	\$ 6,977	\$ 4,923	\$ 2,054	42%
Middle	Upper Collection	\$ 7,959	\$ 5,665	\$ 2,294	40%
Middle	Middle Collection	\$ 6,902	\$ 5,012	\$ 1,890	38%
Low	Medio Creek	\$ 6,734	\$ 5,084	\$ 1,650	32%
Low	Upper Medina	\$ 6,793	\$ 4,728	\$ 2,065	44%Max %
Low	Lower Medina	\$ 5,720	\$ 4,269	\$ 1,451	34%Min fee
Low	Upper Collection	\$ 7,775	\$ 5,470	\$ 2,305	42%
Low	Middle Collection	\$ 6,718	\$ 4,817	\$ 1,901	39%
Low	Lower Collection	\$ 5,970	\$ 4,227	\$ 1,743	41%

Proposed Impact Fees

Current DSP Service Area

DSP Areas	Water Service Area	Wastewater Service Area	Proposed Impact Fee per EDU	Current Impact Fee per EDU	Increase / (Decrease)	% Increase
Hill Country	Middle	Upper Collection	\$ 7,959	\$ 7,835	\$ 124	2%
Hill Country	Middle	Middle Collection	\$ 6,902	\$ 7,182	\$ (280)	-4%
Hill Country	Low	Middle Collection	\$ 6,718	\$ 7,182	\$ (464)	-6%
Northeast	Low	Middle Collection	\$ 6,718	\$ 3,360	\$ 3,358	100%
Southeast	Low	Lower Collection	\$ 5,970	\$ 3,395	\$ 2,575	76%
Southeast	Low	Lower Medina	\$ 5,720	\$ 3,437	\$ 2,283	66%
Southside	Low	Lower Collection	\$ 5,970	\$ 3,494	\$ 2,476	71%
Southside	Low	Upper Medina	\$ 6,793	\$ 3,995	\$ 2,798	70%
Southside	Low	Lower Medina	\$ 5,720	\$ 3,536	\$ 2,184	62%
Northwest	High	Upper Collection	\$ 8,101	\$ 6,959	\$ 1,142	16%
Northwest	Middle	Medio Creek	\$ 6,918	\$ 6,573	\$ 345	5%
Northwest	Middle	Upper Medina	\$ 6,977	\$ 6,217	\$ 760	12%
Northwest	Low	Medio Creek	\$ 6,734	\$ 6,573	\$ 161	2%
Northwest	Low	Upper Medina	\$ 6,793	\$ 6,217	\$ 576	9%

SAWS Water and Sewer Impact Fees

Water Overlaid on Sewer

